

Greenhouse Space for Lease

Short- and long-term rental opportunities



Overview

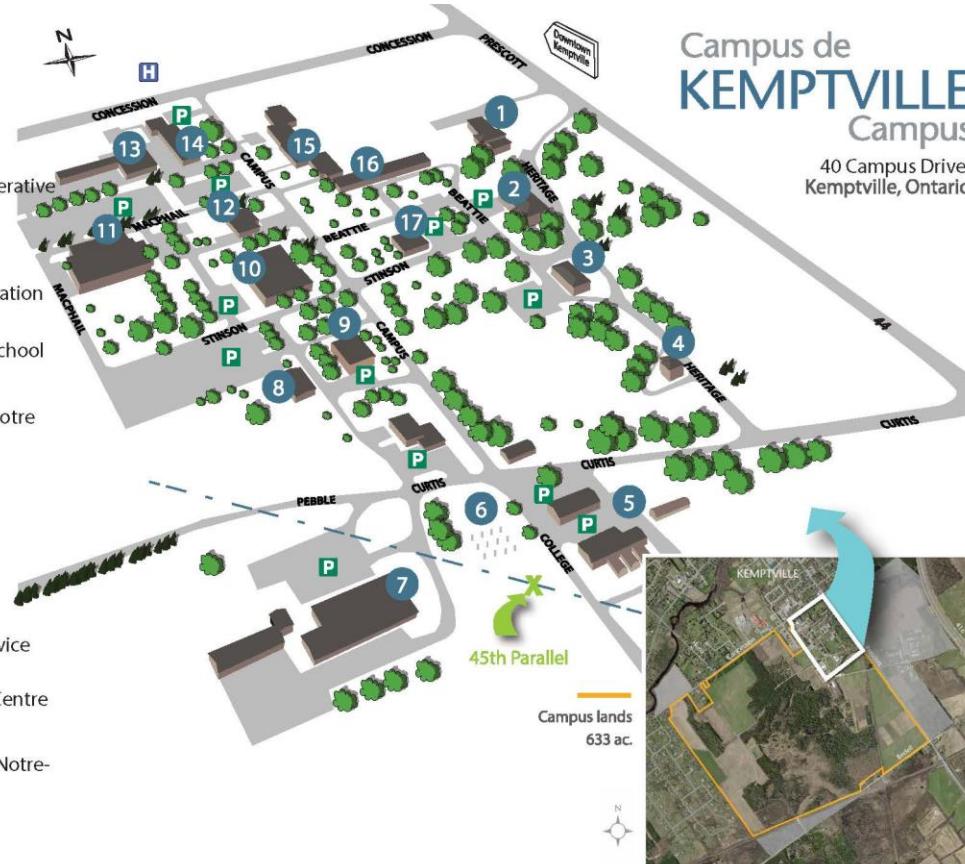
- About Kemptville Campus
- Available space
 - AJ Logsdail Greenhouse – West Wing
 - AJ Logsdail Greenhouse – Garage/Storage Area
 - AJ Logsdail Greenhouse – Central Wing (as a shared space opportunity)
- Greenhouse Floor Plans
- Application Process



Campus Map

Available for Rent: A.J. Logsdail Greenhouses

- 1 Heritage Hall
– Catered Affairs
- 2 Administration Building
– École Rivière Rideau
- 3 Purvis Hall - ACND
- 4 Leahurst – North Grenville Cooperative
Preschool
- 5 A.J. Logsdail
– Greenhouses
- 6 Environment Canada Weather Station
- 7 Power & Equipment - TR Leger School
- 8 Kemptville Live Music Festival
- 9 Fraser – l'Académie catholique Notre
Dame
- 10 F.J. Parish Hall - Campus office
- 11 W.B. George Centre
- 12 Animal Health Lab
– University of Guelph
- 13 Ontario Government
– OMAFRA
- 14 Ontario Government – MNR, Service
Ontario
- 15 Bell Hall - COVID Assessment Centre
- 16 Rorke – École Rivière Rideau
- 17 Gibson – l'Académie catholique Notre-
Dame



About Kemptville Campus

- Kemptville Campus was created by the Municipality of North Grenville as a not-for-profit with an arms-length board.
- Our mandate is to maintain and renew the former Kemptville Agricultural College as a mixed-use, multi-tenant education and community centre.
- The campus covers 630 acres of land including forests, wetlands, farmland, and a “village” of buildings and recreational facilities.
- The campus is located on the traditional territory of the Omàmiwinini (the Algonquin Anishinabek Nation).
- **Our work is guided by the pillars of education and training; health and wellness; and local economic development – all within an overarching framework of climate change resilience.**

AJ Logsdail Greenhouse – East Wing

- Space divided into two halves, each with grow benches suitable for seed starting. Total of 1322 sq.ft.
- Central heating
- Automated roof vents, manual side vents
- Floor drainage and easy access to water.

AJ Logsdail Greenhouse – Garage/Storage Area

- Adjacent to glass greenhouses and central classroom
- Enclosed space with a two overhead doors (approx 867 sq.ft.)
- Concrete floor
- Suitable for dry storage or as a packing station
- Two smaller rooms could be used for dry or cold storage



AJ Logsdail Greenhouse – Central Wing

- Glass greenhouse – 1,709 sq. ft.
- Concrete floor, central heating, automated ventilation
- Easy-access water source and floor drainage
- Suitable for vertical growing, plant sales, community events, and more

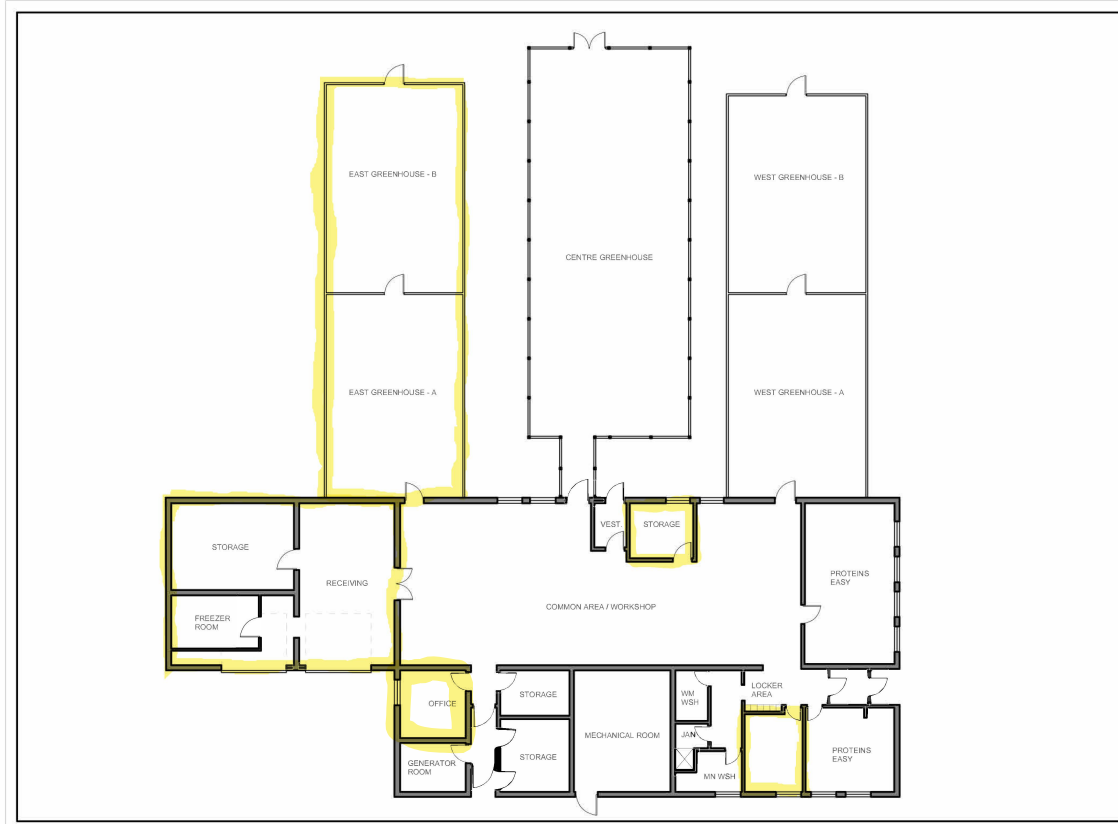


AJ Logsdail Greenhouse – Central Classroom Area

- Indoor space that connects the glass greenhouse wings, the garage area, washrooms, and a few small offices.
- Available for short-term rentals.
- Suitable for events, workshops, classes

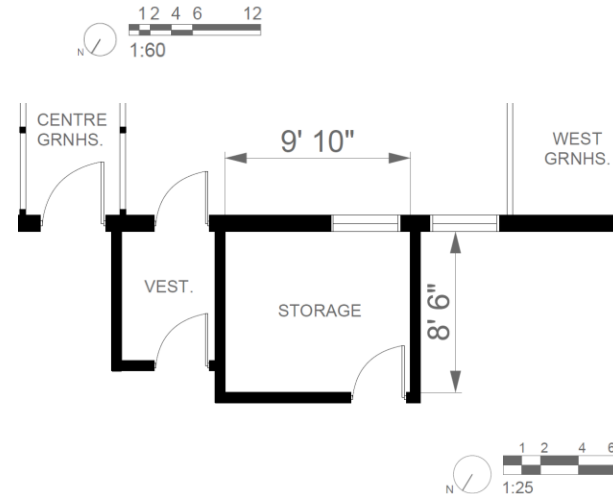
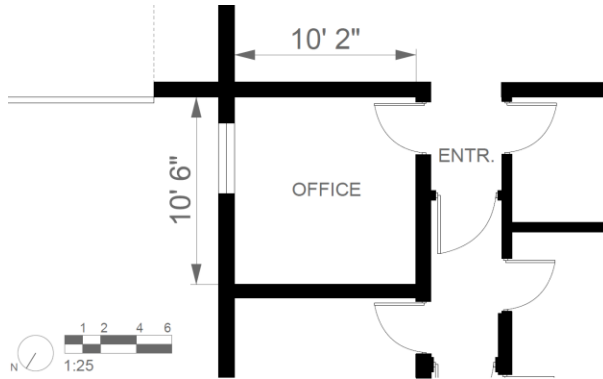
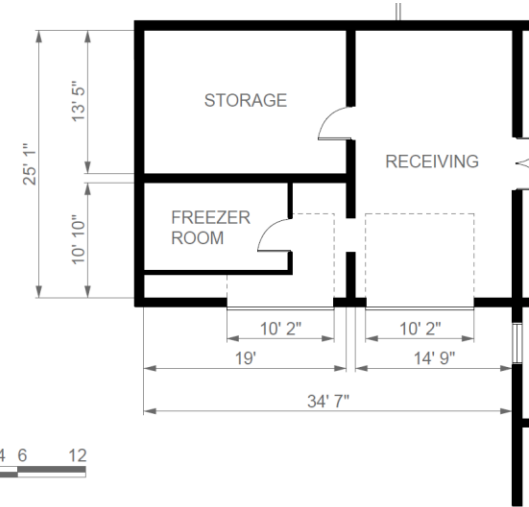


Floor Plan - Overview of Long-term Spaces



Garage/Storage and Offices – Detailed View

- A.J. Logsdail Greenhouse
 - Garage/Storage Area (top right)
 - Small storage room (lower right)
 - Office (lower left)



Thanks for your interest!

Contact us:

Leela Ramachandran
Program Manager

Lramachandran@KemptvilleCampus.ca

613-258-8336 ext. 4

www.KemptvilleCampus.ca

